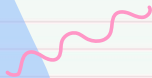



Special Education



The background features a light pink grid pattern. Overlaid on this are several large, soft-edged pastel shapes in shades of green, pink, and orange. Small decorative elements, including blue and pink wavy lines and clusters of small dots, are scattered throughout the background.

Special Education Enrollment

Enrollment

2019–20

274

(1099 total)
25%

2020–21

262

(1090 total)
24%

2021–22

265

(1142 total)
23%

2022–23

276

(1009 total)
25%

2023–24

302

(1099 total)
27%

Enrollment

A Closer Look

Disability Category	# of students 22-23 (276)	# of students 23-24 (302)
Specific Learning Disability	127	122
Other Health Impairment	48	58
Autism	38	41
Speech or Language Impairment	30	33
Emotional Disturbance	19	26
Intellectual Disability	12	19

Enrollment

A Closer Look

Disability Category	# of students 22-23 (276)	# of students 23-24 (302)
Deaf Blindness	0	1
Visual Impairment including Blindness	1	1
Hearing Impaired	1	1
TBI	0	0
Multiple Disabilities	0	0
Orthopedic Impairment	0	0

Enrollment

A Closer Look

Educational Placement	# of students 22-23	# of students 23-24
Special Education Inside Regular Class 80% or More of Day	178	167
Special Education Inside Regular Class 40%-79% of Day	85	91
Special Education Inside Regular Class Less Than 40% of Day	17	11
Other Private Separate Facility (Non Residential)	7	22

Enrollment

Per Grade Level

K	1st	2nd	3rd	4th	5th	6th
13	22	27	22	21	14	29
7th	8th	9th	10th	11th	12th	12+
31	31	36	29	23	19	3

Challenges



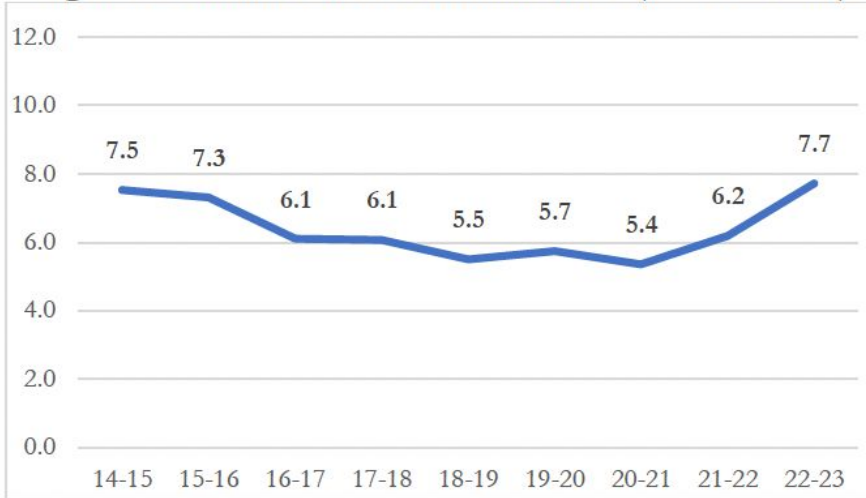


Staffing Shortages

- The mass exodus
- Decrease in certified teachers

Staffing Shortages

Figure 1: Annual Teacher Attrition Rates (14-15 to 22-23)

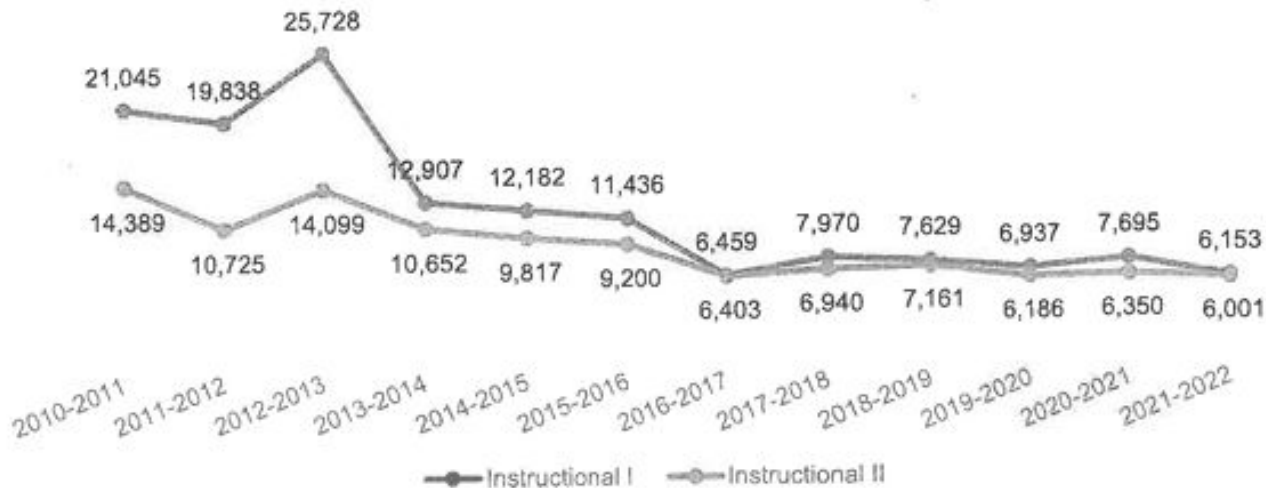


Data Source: PDE Educator Employment files; Author's analysis

- In Pa, there was a 1.5 percentage point increase in teacher attrition in Pennsylvania from 21–22 to 22–23.
- This was the largest increase on record for the Commonwealth led to 7.7% of all teachers in the Commonwealth leaving their positions as teachers in Pennsylvania—a total of 9,587.
- This was the largest number of teachers leaving on record.

Staffing Shortages

Figure 2. Instructional I and II Certifications Issued in Pennsylvania, 2010-2022⁶



Staffing Shortages

School Year	# of teachers
2010-2011	35,434
2011-2012	30,563
2012-2013	39,827
2013-2014	23,559
2014-2015	21,999
2015-2016	20,636

School Year	# of teachers
2016-2017	12,862
2017-2018	14,910
2018-2019	14,790
2019-2020	13,123
2020-2021	14,045
2021-2022	12,154

Staffing Shortages

Special Education Vacancies

Primary

0 VACANCIES

Elementary

0 VACANCIES

MSHS

**1 VACANCY
(ES)**

Staffing Shortages

Compared to Other Berks Districts

Teacher

3 Districts -
1 vacancy each

1 District -
40 vacancies

Para

1 District -
7 vacancies

1 District -
50% vacancies

Speech

2 Districts -
1 vacancy each

In-person providers

School Psych

1 District - 1 vacancy



Staffing Shortages

Full-Time Equivalent (FTE)

Special education teachers have a limit to the number of students on their caseload.

Staffing Shortages

Full-Time Equivalent (FTE)

	Itinerant (20% or Less)	Supplemental (Less Than 80% but More Than 20%)	Full-Time (80% or More)
Learning Support	50	20	12
Life Skills Support	20	20	12 (Grades K-6) 15 (Grades 7-12)
Emotional Support	50	20	12
Deaf And Hearing Impaired Support	50	15	8
Blind And Visually Impaired Support	50	15	12
Speech And Language Support	65		8
Physical Support	50	15	12
Autistic Support	12	8	8
Multiple Disabilities Support	12	8	8

Staffing Shortages

Our Full-Time Equivalent (FTE)

Primary

K-2 Caseload - 73%

1-3 Caseload - 72%

3rd Caseload - 59%

AS Caseload - 100%

Elementary

4/5 Caseload - 68%

6th Caseload - 38%

ES Caseload - 33%

AS Caseload - 79%

MSHS

7th Caseload - 77%

8/9 Caseload - 77%

9/10 Caseload - 76%

10th Caseload - 85%

11/12 Caseload - 83%

12th Caseload - 73%

LSS Caseload - 100%

ES Caseload - 67%



Financial Impact



Increase in Population



Out of District Placements



Litigation

Financial Impact

Impacts of Litigation

Attorney's Fees

Our Attorney
Family's Attorney

Compensatory Education

Monthly Fees
Unused money

Time

Admin
Tech Dept
Teachers

Financial Impact

Other Options Besides Litigation

Contact Us

Special Education
Office

Facilitated IEP

Office of Dispute
Resolution

Mediation

Office of Dispute
Resolution

Financial Impact

Litigation Cases

2019–20

3

2020–21

0

2021–22

2

2022–23

8

2023–24

2

Financial Impact

Litigation Compared to Other Berks Districts

Number of Legal Cases - 23-24

1 District - 0 cases

1 District - 22 cases

4 District 2- 2 cases

Questions?



Thank you!

